

**Fitting Instructions**  
for YewdaleDefiant<sup>®</sup> ShadeBox<sup>®</sup>



**Fitting Instructions**

YewdaleDefiant<sup>®</sup> ShadeBox<sup>®</sup>

Part no: 989

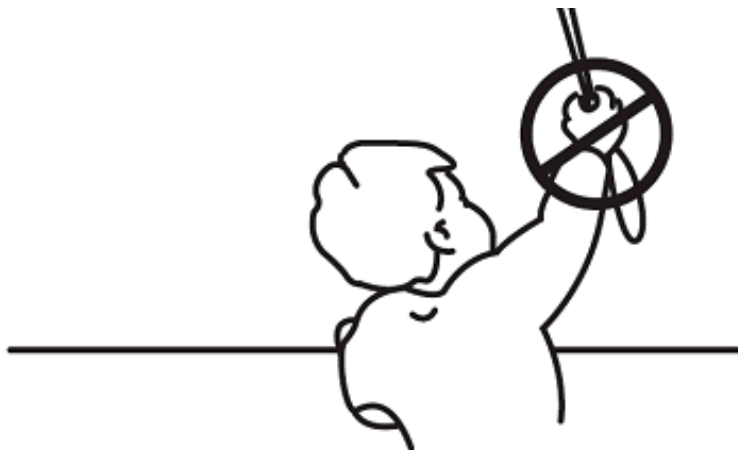
[yewdale.co.uk](http://yewdale.co.uk)

# Fitting Instructions

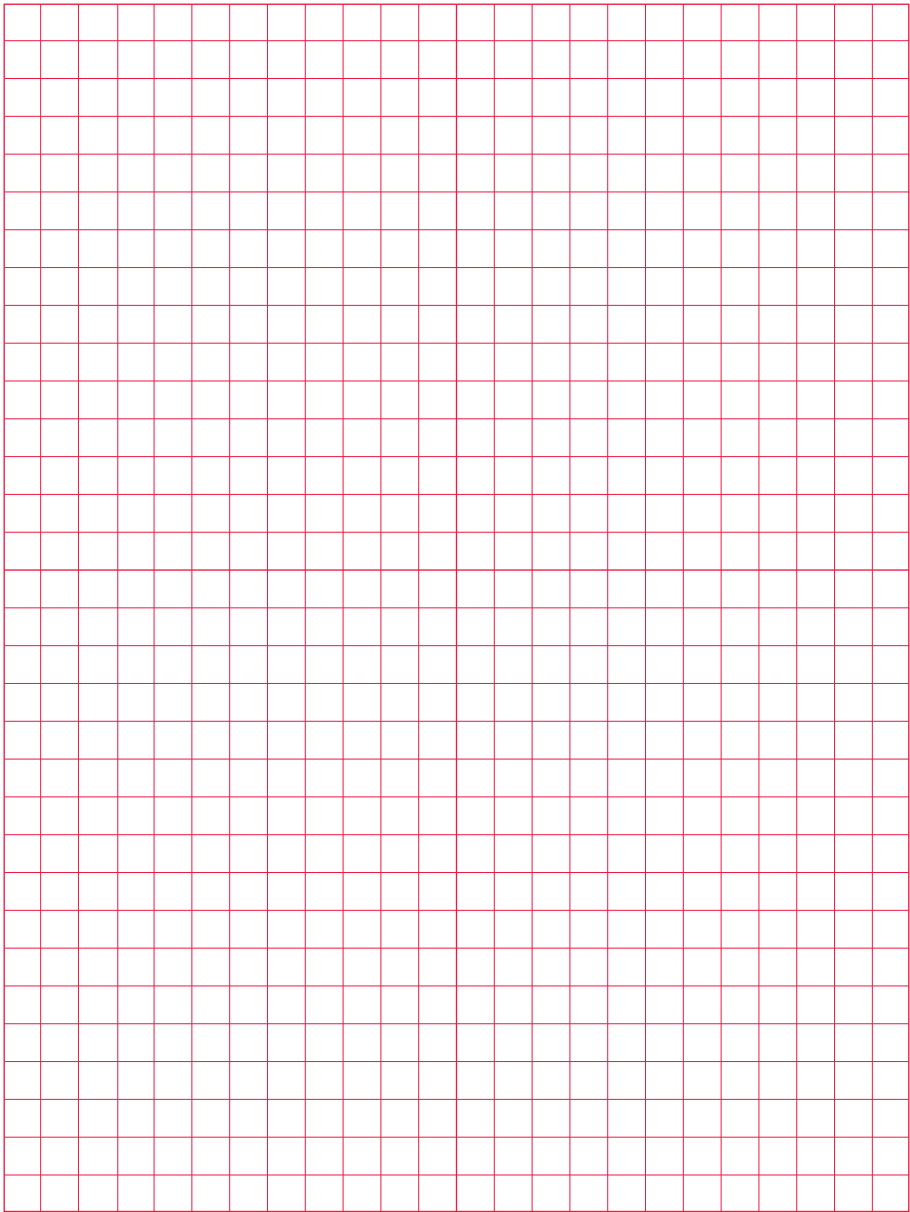
YewdaleDefiant® ShadeBox®

## Safety Instructions:

1. Loops in pull cords, chains, tapes and inner cords that operate the product can cause strangulation
2. To avoid strangulation and entanglement, keep cords out of the reach of young children. Cords may become wrapped around a child's neck
3. Move beds, cots and furniture away from window covering cords
4. Do not tie cords together. Make sure cords do not twist and create a loop R20 Sidewinder control



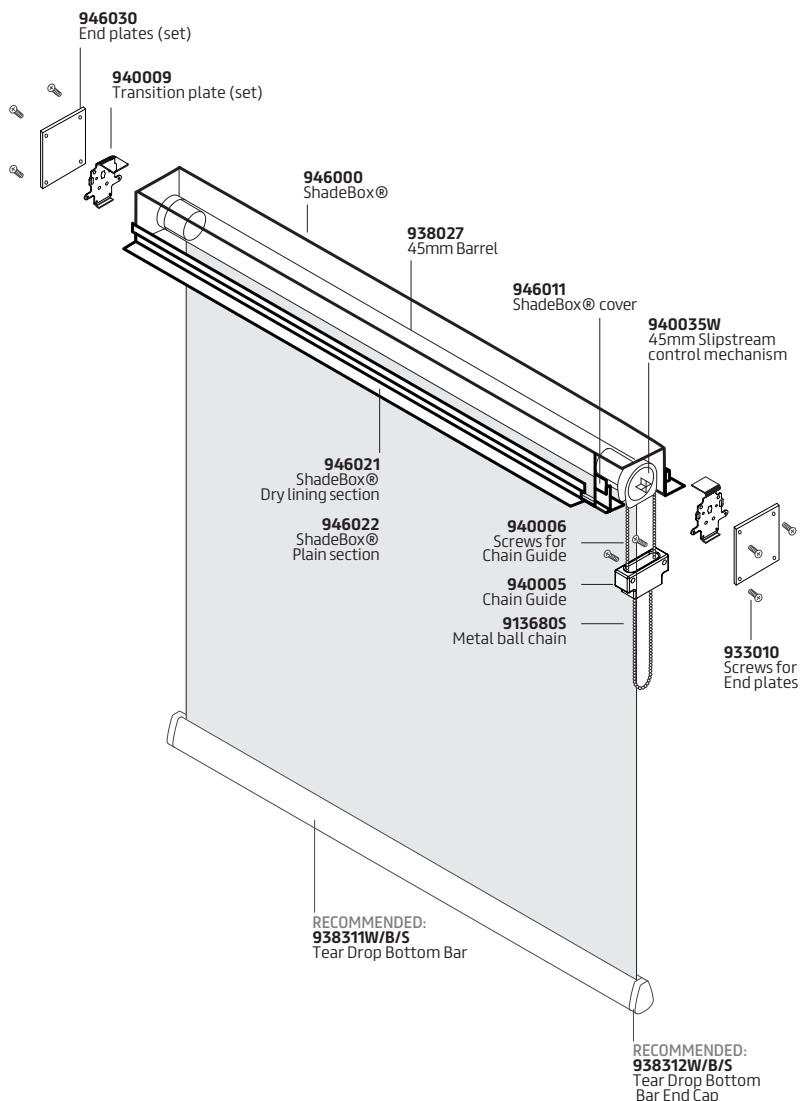
**N.B.** For more information and child safety device fitting instructions, see Point 10 on Page 7.



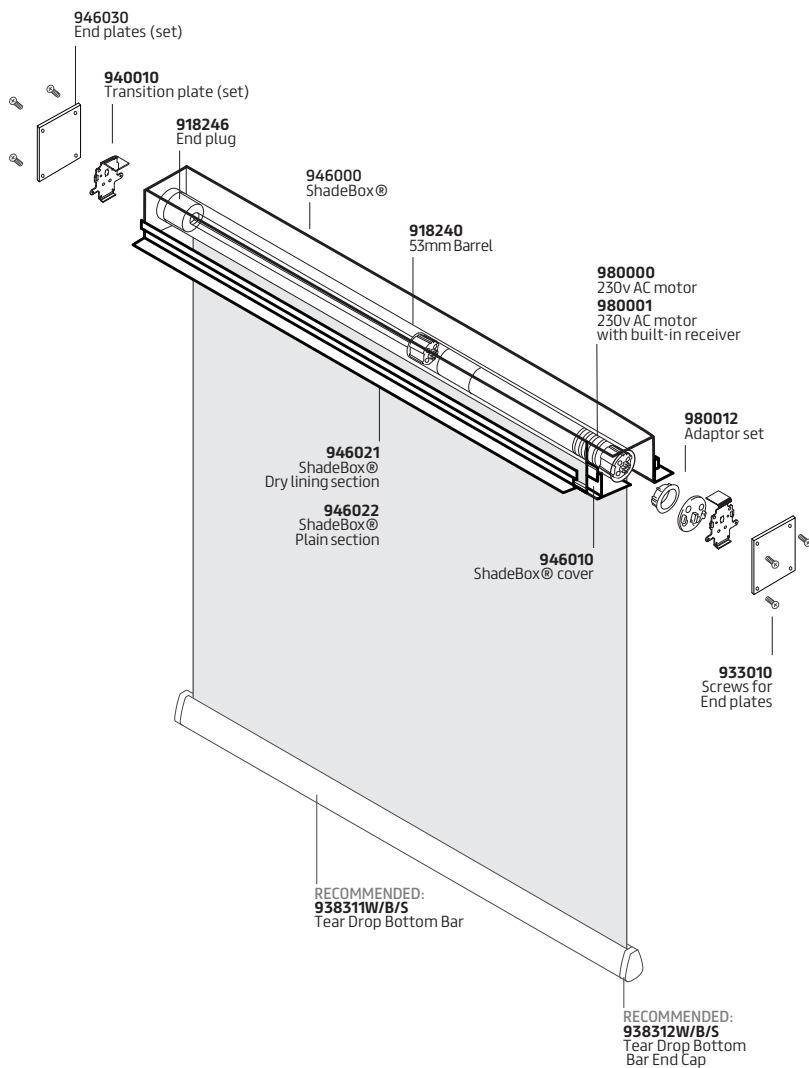
# Fitting Instructions

## YewdaleDefiant® ShadeBox®

### ShadeBox® with Chain operation:



## ShadeBox® with Electric operation:



# Fitting Instructions

## YewdaleDefiant® ShadeBox®

### ShadeBox®:

1. Unpack the components.
2. If required cut the ShadeBox® headbox to the desired length.
3. If chain operated, fit the chain guide/s to the bottom of the transition plates using the screws provided. Insert the transition plates into the top grooves of the headbox (ensuring these are the correct way around).
4. Position and secure with screws the transition plates in desired locations according to the blind size that you have. There maybe more than one set of transition plates in ShadeBox® headbox.
5. Cut the drylining/plain sections to desired length. Then slide the drylining / plain sections to the outside of the ShadeBox®
6. Fix the endplates onto each end (note: you will only need 3 fixings to secure)
7. Fix the ShadeBox® into the ceiling with appropriate screws and fixings ensuring it is the correct way round (The smooth side of the internal profile is the back of the Shadebox). Two screws/fixings should go through both parallel running V-grooves in the top of the ShadeBox®. Screws/fixings should be 100mm in from each end and extra fixings will be needed for every 1000mm of length.

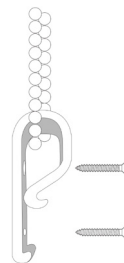
**NB. The bottom of the ShadeBox® should be in line with the finished ceiling level.**

8. Lifting the blind/s into position, secure into the transition plates.
9. If chain operated, be sure to thread the chain through the chain guide. If electric, be sure to use the L-shaped extrusion for supporting the cable.

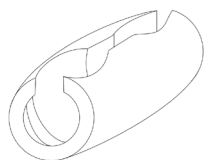
10. Ensure the relevant child safety device is used to comply with BS EN13120:2009+A1:2014, BS EN16433:2014 and BS EN16434:2014 as follows:  
\*You will have been provided with either a chain tidy or easy break chain connector (also see page 8 & 11)

### Chain Tidy

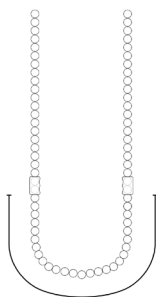
The chain tidy will be attached to the chain when the blind arrives. The chain tidy should be at a maximum distance from the control mechanism, keeping the chain taut (not under excessive tension however as this could negatively affect the longevity and operation of the blind). Put the retaining device on the wall, mark fixing holes with a pencil, drill the holes and screw the device to the wall with suitable fixings.



### Easy Break Chain Connectors



Easy break connector



200mm apart

Two easy break chain connectors are connected to the operating chain 200mm apart. This ensures that at least one of them will be in the vertical position ensuring they perform as required. If excessive weight is applied within the loop a connector will come apart. If a connector comes apart and is undamaged then it will need to be re-connected by inserting the last ball on the end of the chain into the hole in the connector and pushed into place.

11. Cut the ShadeBox® cover to the desired length and fit by angling up into the bracket, straighten and it will be held securely in place.
12. Check that the blind operates correctly.

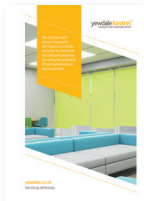


Yewdale, Enterprise Way,  
 Wickford, Essex SS11 8DH  
**Call** +44 (0)1268 570900  
**Fax** +44 (0)1268 732509  
**Email** [enquiries@yewdale.co.uk](mailto:enquiries@yewdale.co.uk)  
**Visit** [yewdale.co.uk](http://yewdale.co.uk)

For more information on all  
 Yewdale products, please call  
 the sales department.



yewdale **Defiant**<sup>®</sup>  
 FABRIC AND BLIND SYSTEMS



yewdale **Kestrel**<sup>®</sup>  
 MAGNETIC ANTI-LIGATURE SYSTEM



yewdale **Movatrack**<sup>®</sup>  
 CUBICLE AND TRACK SYSTEMS



yewdale **Harrier**<sup>®</sup>  
 CUBICLE AND SHOWER CURTAINS



yewdale **Vitesse**<sup>®</sup>  
 CURTAIN TRACK SYSTEMS